

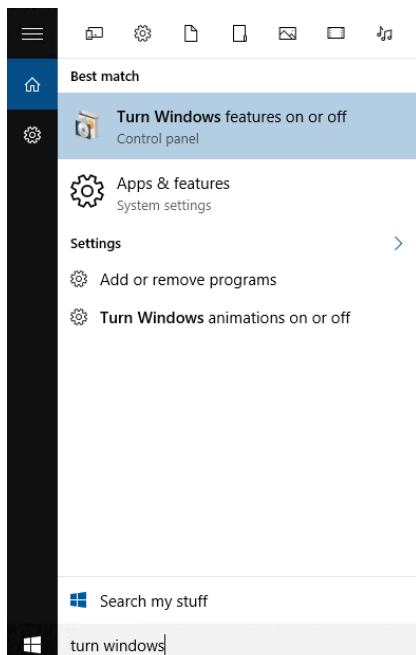
Install elproLOG ANALYZE on Windows 10

Preamble: It is important to follow the exact order of the steps. Otherwise, problems could occur during the execution of elproLOG ANALYZE

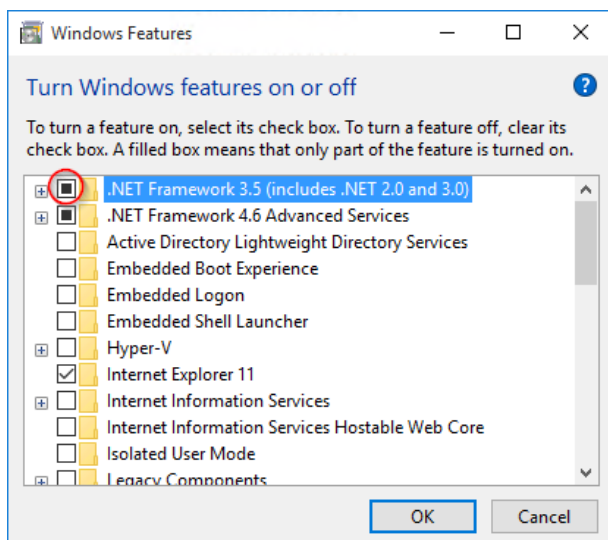
NOTE

If an antivirus software is installed it must be deactivated before beginning with these installation instructions. After successful installation, an exclusion rule must be configured within the antivirus software.

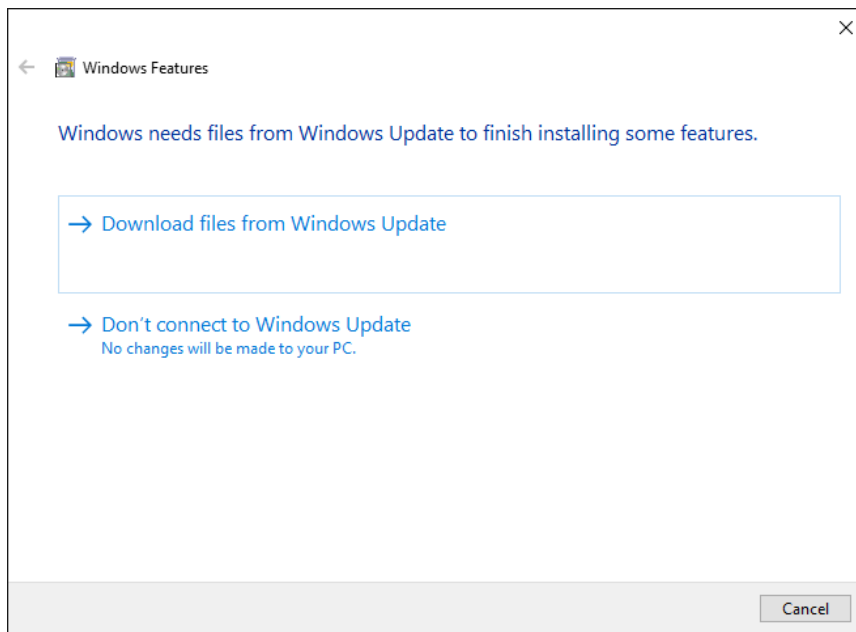
1. Within the start menu, enter the term "Turn Windows" and click on the entry "Turn Windows features on or off".



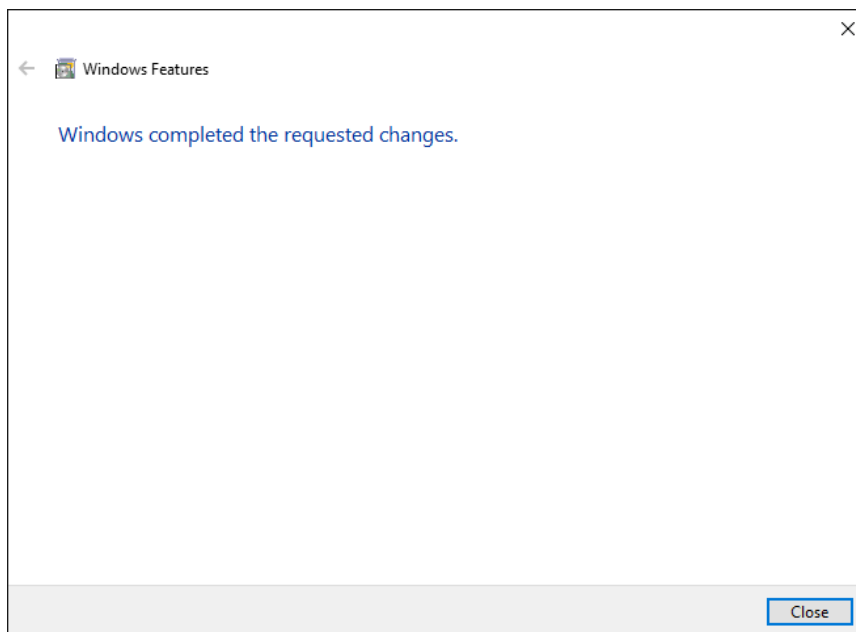
2. Within the „Windows Features“ dialogue, activate the checkbox of the entry „.NET Framework 3.5 (includes .NET 2.0 and 3.0)“ and click on „OK“.



3. In the following dialogue, select the option „Download files from Windows Update“.



4. Wait until the installation is complete.



5. Install elproLOG ANALYZE.

Troubleshooting

If elproLOG ANALYZE is not working properly, follow these instructions:

Use the “Programs and Features” dialogue to uninstall elproLOG ANALYZE. Repeat the installation instructions of this manual.